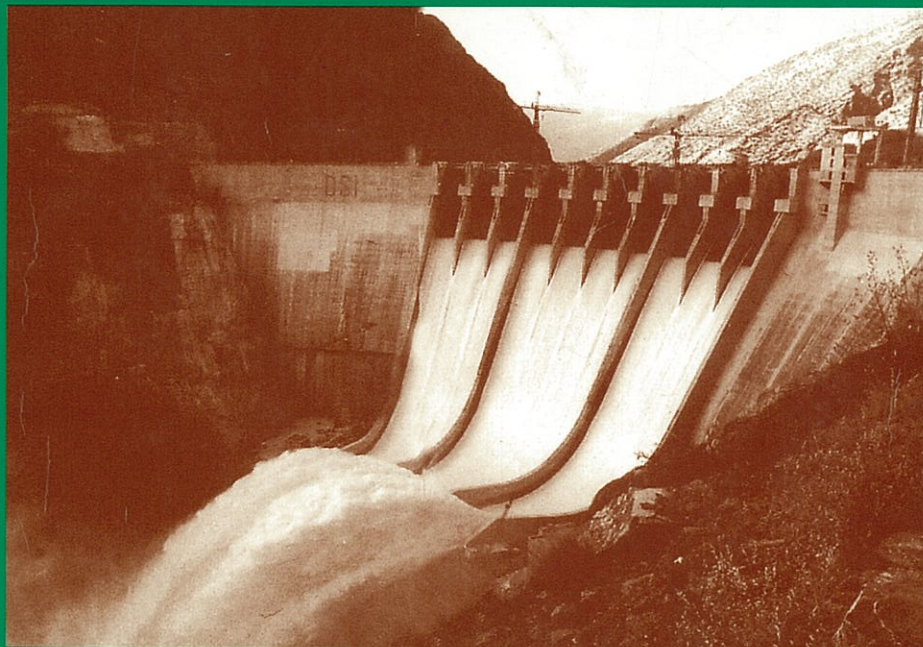


DAM HYDRAULICS



D. L. VISCHER
W. H. HAGER



WILEY
Publishers Since 1807

WILEY SERIES IN
WATER RESOURCES
ENGINEERING

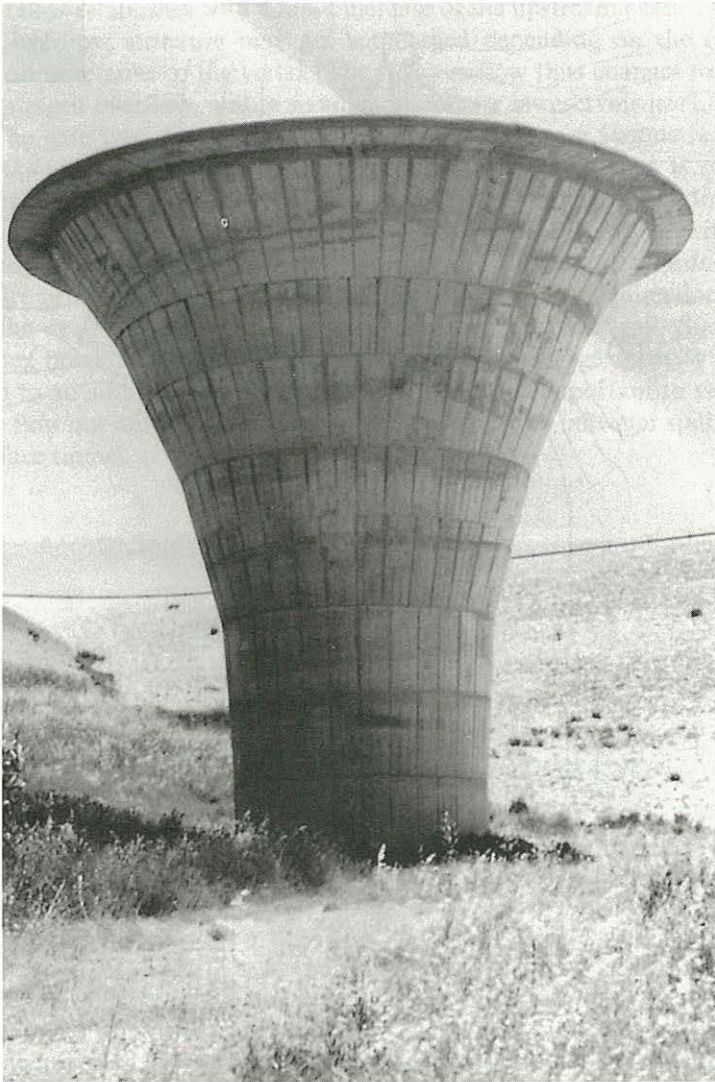


Figure 2.42
Morning glory
spillway of Genzano
dam (Italy). view on
single intake (Salini
Costruttori S.p.A.
Italy)

on the overflow crest. Figure 2.42 relates to a typical Morning glory overflow.

2.4.2 Crest shape

The shape of the Morning Glory overfall is a logical extension of the standard overfall crest. In order to control the crest pressures, sharp-crested circular weirs were tested and both the discharge characteristics and the lower crest geometry were experimentally determined. A basic study was conducted by Wagner (1956) as an extension of the 1948